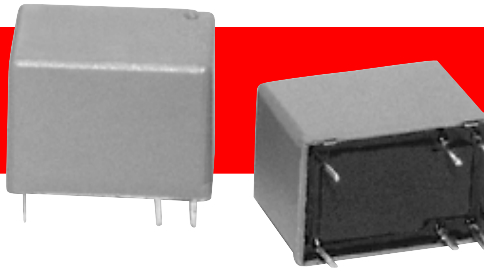
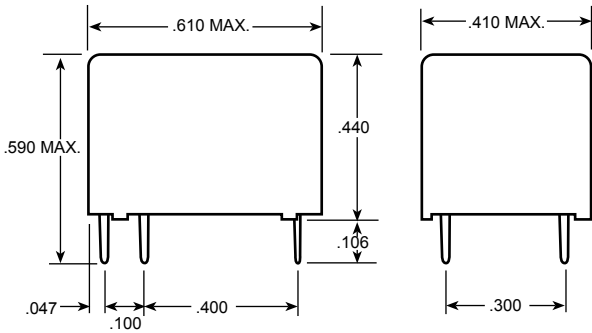


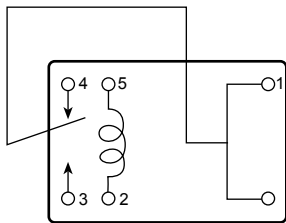
CKB/CKBS



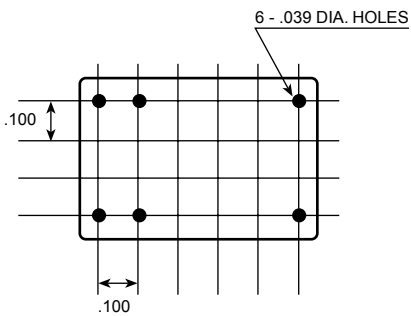
CKB/CKBS



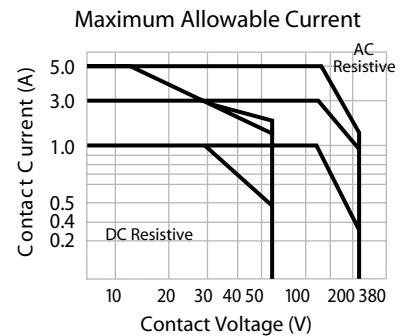
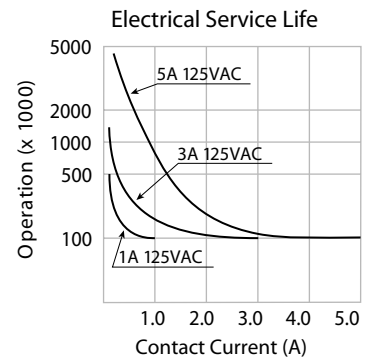
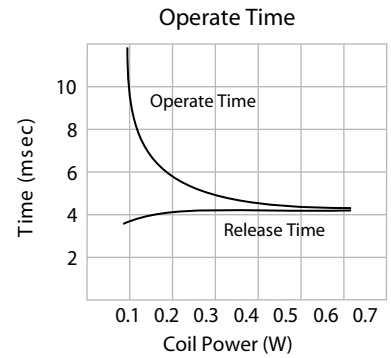
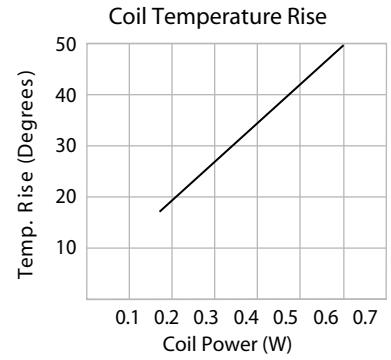
BOTTOM VIEW



DRILLING PLAN



Reference Data



Performance (At Initial Value)

ITEM	TYPE
	CKB / CKBS
Contact Resistance	100 mΩ Max.
Operate Time	5 ms Max.
Release Time	5 ms Max.
Dielectric Strength: Between Coil and Contact Between Contacts	500 V 50 Hz 500 V 50 Hz
Surge Resistance	1000 V (between coil and contact 1x40 μ sec.)
Insulation Resistance	100 MΩ Min. (500 VDC)
Max. ON/OFF Switching: Mechanically Electrically	300 operations/min. 30 operations/min.
Operating Ambient Temperature	-25°C to 55°C
Operating Humidity	40°C 85%
Coil Temperature Rise	UL Specs
Vibration: Endurance Error Operation	10 to 55 Hz Double Amplitude 1.5 mm 10 to 55Hz Double Amplitude 1.5 mm
Shock: Endurance Error Operation	10 G Min. 5 G Min.
Life Expectancy: Mechanically Electrically	10 ⁷ operations/min. (no load) 10 ⁵ operations/min. (at rated load)
Weight	3.5 grams

**CKB
CKBS**

Coil Specification (At 20°C)

TYPE	Nominal Voltage (VDC)	Nominal Current (mA)		Coil Resistance (Ω) ±10%		Must Operate Voltage (VDC) (Max)	Must Release Voltage (VDC) (Min)	Maximum Voltage (VDC)	Coil Power (W)
		CKB	CKBS	CKB	CKBS				
CKB/CKBS	3	120	69	25	45	2.25	0.3	110% of Rated Voltage	CKB Approx. 0.36 CKBS Approx. 0.20
	5	72	45	75	125	3.75	0.5		
	6	60	33	100	180	4.50	0.6		
	9	40	22	225	405	6.75	0.9		
	12	30	17	400	728	9.00	1.2		
	24	15	8.6	1600	2880	18.0	2.4		

Contact Rating

ITEM	TYPE
	CKB / CKBS
Contact Capacity Resistive Load (Cos. φ = 1) Inductive Load (Cos. φ = 0.4 L/R = 7 msec.)	See Chart See Chart
Rated Carrying Current	3 A
Max. Allowable Voltage	DC 110 V, AC 380 V
Max. Allowable Current	3 A
Contact Material	AgSnO ₂

Ordering Information

CKB S 1C 12VDC

Coil Voltage
See coil specifications for available voltages. Other voltages available as special orders.

Contact Configuration
1A – SPST; 1C – SPDT

S – Sensitive Coil
Nil – Standard Coil

UL #E96834(M) (U.S. & Canada)