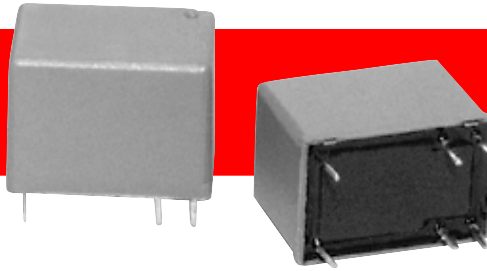
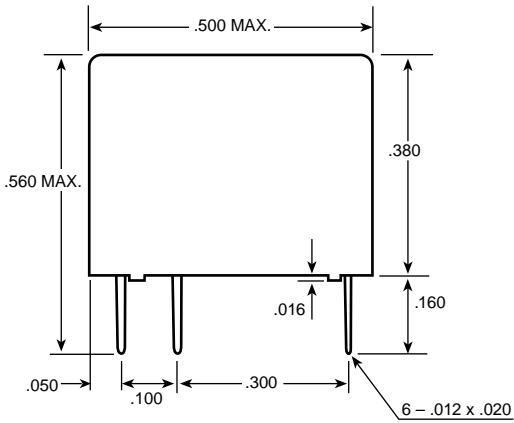


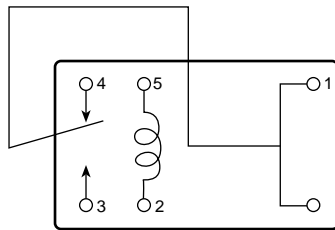
# CKD/CKDS



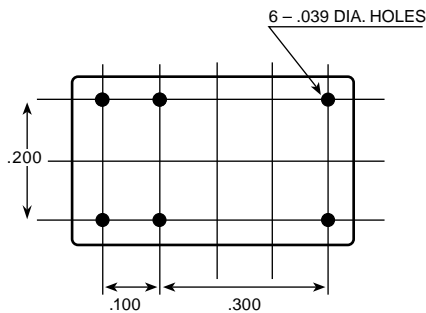
## CKD



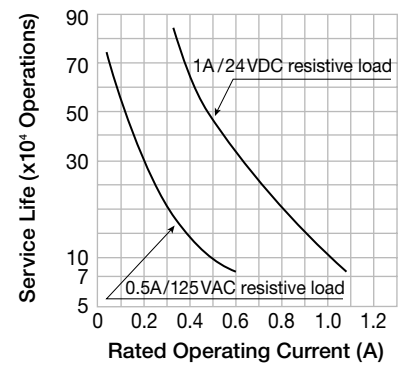
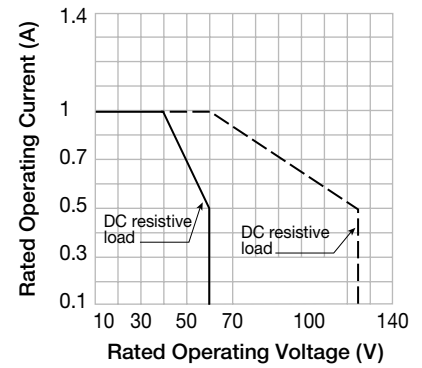
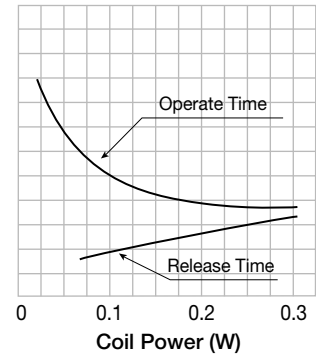
### BOTTOM VIEW



### DRILLING PLAN



## Reference Data



## Performance (At Initial Value)

ITEM	TYPE
	CKD/CKDS
Contact Resistance	≤ 100 mΩ
Operate Time	≤ 5 ms
Release Time	≤ 5 ms
Dielectric Strength: Between Coil and Contact Between Contacts	1000 V 50 Hz 400 V 50 Hz
Surge Resistance	1000 V (between coil and contact 1x40 μ sec.)
Insulation Resistance	1000 M Ω Min. (500 VDC)
Max. ON/OFF Switching: Mechanically Electrically	300 operations/min. 30 operations/min.
Operating Ambient Temperature	-30°C to 70 °C
Operating Humidity	35 °C — 86%
Vibration Operational	10 – 55Hz, 3.3 mm
Shock Operational	100m/s <sup>3</sup>
Life Expectancy: Mechanically Electrically	5 x 10 <sup>6</sup> operations/min. 1 x 10 <sup>5</sup> operations/min. (at rated load)
Weight	About 2.2g

**CKD  
CKDS**

## Coil Specification (At 20°C)

Type	Nominal Voltage (VDC)	Coil Resistance (Ω ± 10%)	Operate Voltage (VDC/max)	Must Release Voltage (VDC/min)	Max. Voltage (VDC)	Nominal Power (W) Consumption
CKD (Standard)	1.5	11.3	1.2	0.15	110% of rated voltage	Approx. 0.20
	3	45	2.4	0.30		
	5	125	4.0	0.50		
	6	180	4.8	0.60		
	9	405	7.2	0.90		
	12	720	9.6	1.20		
	24	2880	19.2	2.40		
CKDS (High Sensitivity)	1.5	15.0	1.2	0.15	110% of rated voltage	Approx. 0.15
	3	60	2.4	0.30		
	5	166.7	4.0	0.50		
	6	240	4.8	0.60		
	9	540	7.2	0.90		
	12	960	9.6	1.20		
	24	3840	19.2	2.40		

## Contact Rating

ITEM	TYPE
	CKC
Contact Capacity Resistive Load (Cos. φ = 1) Inductive Load (Cos. φ = 0.4 L/R = 7 msec.)	See Chart See Chart
Rated Carrying Current	0.5 A, 125 VAC / 1 A 24 VDC
Max. Allowable Voltage	60 VDC, 125 VAC
Max. Allowable Current	1 A
Contact Material	Ag, AgPd (Au clad)

UL #E96834(M) (U.S. & Canada) C.S.A. #LR83798-1

## Ordering Information

CKD S 1C 12VDC

Coil Voltage  
See coil specifications for available voltages.  
Other voltages available as special orders.

Contact Configuration  
1C – SPDT

S – Sensitive Coil  
Nil – Standard Coil



sky  
electronics  
INTERNATIONAL