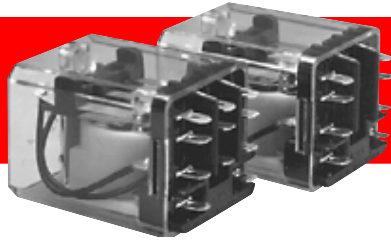
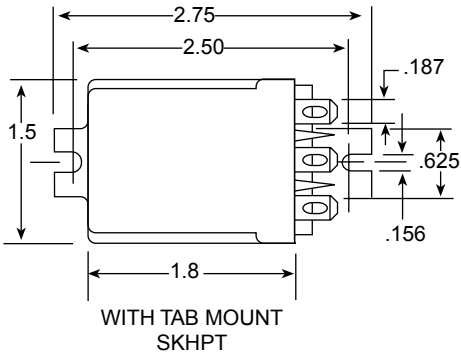
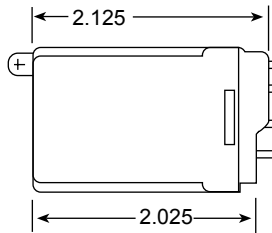


# SKHP

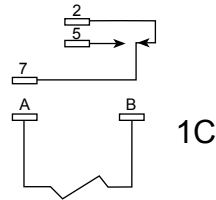
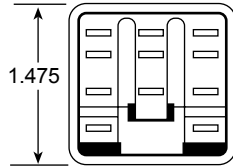


## SPDT

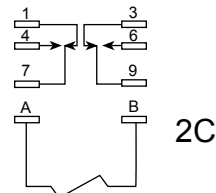
PLUG-IN WITH MANUAL ACTUATOR



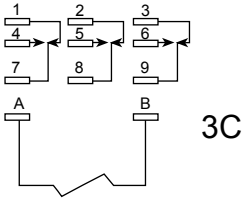
WITH TAB MOUNT SKHPT



1C

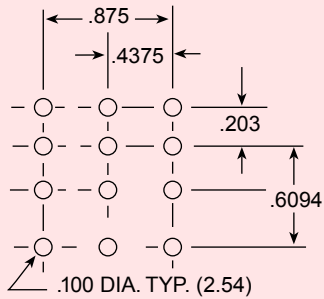


2C

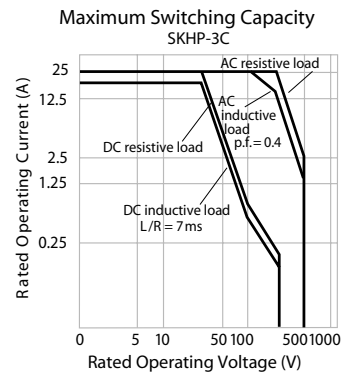
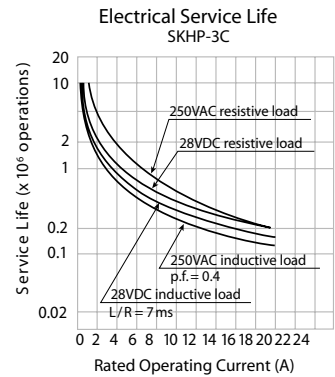
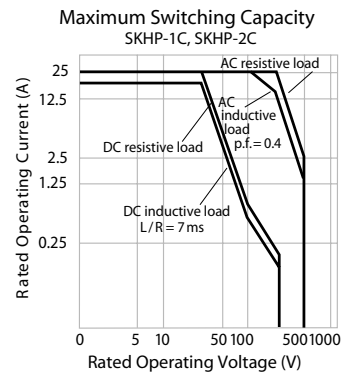
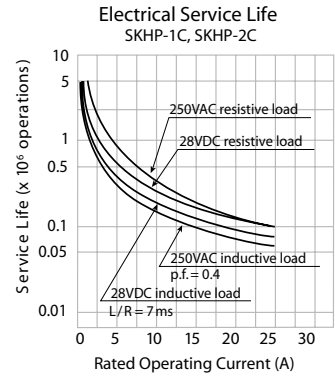


3C

P.C. MOUNT



## Reference Data



## Performance (At Initial Value)

ITEM	TYPE
	SKHP
Contact Resistance	50 m Ω Max.
Operate Time	15 msec Max.
Release Time	10 msec Max.
Dielectric Strength: Between Coil and Contact Between Contacts	AC 1500 V AC 500 V
Insulation Resistance	100 MΩ Min. (500 VDC)
Operating Ambient Temperature	-45°C to 70°C
Pull-in Voltage	AC — 85% of nominal voltage DC — 75% of nominal voltage
Life Expectancy: Mechanically Electrically	10,000,000 operations/min. 100,000 operations/min.

# SKHP

**Socket:  
NDSQ-11A or  
NDSQ-11AF**

## Coil Specification

AC Coil Voltage		Resist Ohms	DC Coil Voltage		Resist Ohms	Maximum Voltage		
SP	6V	4.2	110/125V	6V	32.1		110% of Nominal Voltage	
	12V	18		12V	120			
	24V	72		24V	340			
DP	120V	1700	110/125V	48V	1360	110% of Nominal Voltage		
	240V	7200		8500				
3P	6V	3.2	110/125V					110% of Nominal Voltage
	12V	14						
	24V	60						
	120V	1300						
	240V	4300						

## Contact Rating (At 20°C)

ITEM	TYPE
	SKHP
Contact Capacity Resistive Load (Cos. $\phi = 1$ )	1 and 2 Pole — 25 A 3 Pole — 20 A
Rated Carrying Current	1 and 2 Pole — 25 A
Max. Allowable Voltage	600 V
Max. Allowable Current	25 A
Max. Allowable Power Force	3000 W
Referencial Min. Applicable Load	100 MA
Contact Material	AgCdO

## Ordering Information

SKH P L 1C 12VAC

Coil Voltage  
See coil specifications  
for available voltages.  
Other voltages available  
as special orders.

Contact Configuration  
1C, 2C, 3C

L – Lamp  
M – Push Button

P – Plug In  
B – Printed Circuit  
T – Side Tab Mount  
TT – Top Tab Mount

UL #E96834(M) (U.S. & Canada)

C.S.A. #LR83798-1