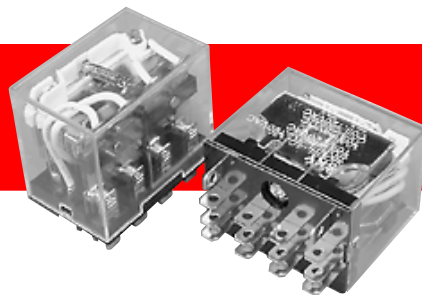
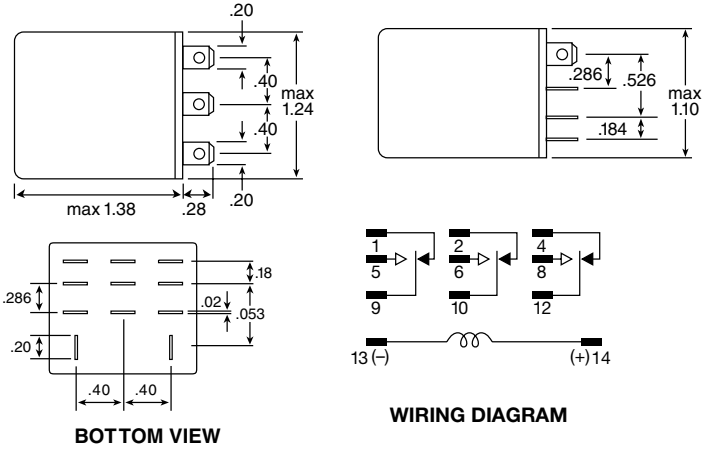


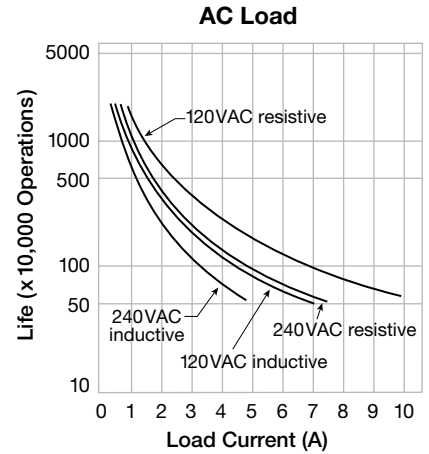
SKNP-3C,4C



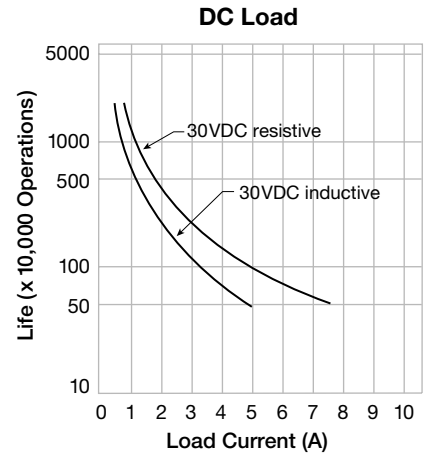
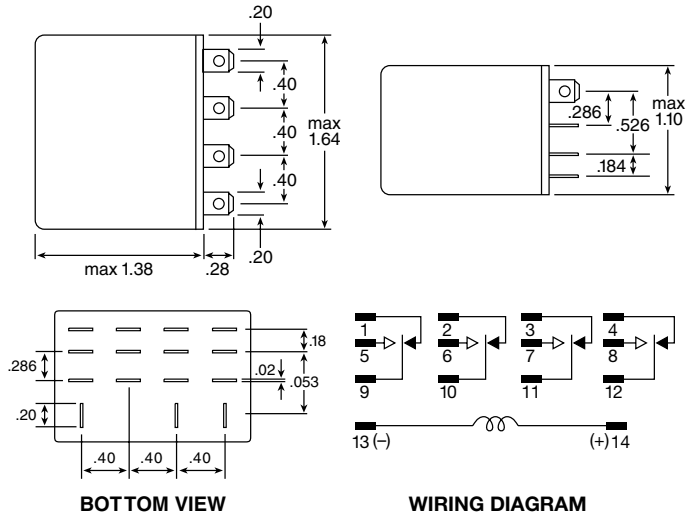
3PDT



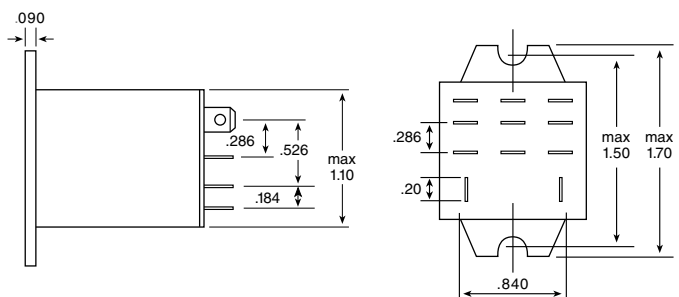
Reference Data



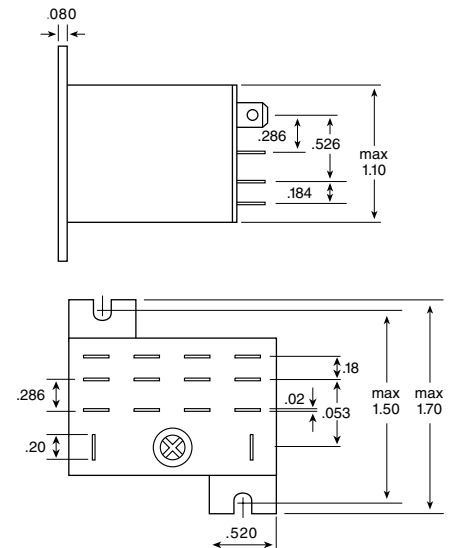
4PDT



SKNT-3C



SKNT-4C

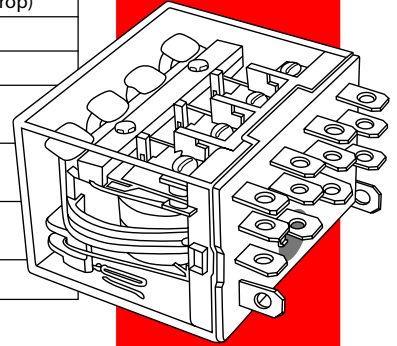


Performance (At Initial Value)

ITEM	TYPE	
	3 Pole / 4 Pole	
Contact Resistance	100 m Ω Max.	
Operate Time	25 msec Max.	
Release Time	25 msec Max.	
Dielectric Strength: Between Coil and Contact Between Contacts	AC 1500 V, 50/60 Hz (1 minute) AC 1000 V, 50/60 Hz (1 minute)	
Surge Resistance	3000 V (between coil and contact 1x40 μ sec.)	
Insulation Resistance	100 M Ω Min. (500 VDC)	
Max. ON/OFF Switching: Mechanically Electrically	240 operations/min. 30 operations/min.	
Operating Ambient Temperature	-25 °C to +55 °C (no water condensation and no water drop)	
Operating Humidity	45% to 85% R.H.	
Coil Temperature Rise	60 ° Max. (at rated coil voltage)	
Vibration: Endurance Error Operation	10 to 55 Hz Double Amplitude 1.0 mm 10 to 55 Hz Double Amplitude 1.0 mm	
Shock: Endurance Error Operation	100 G Min. 10 G Min.	
Life Expectancy: Mechanically Electrically	10,000,000 operations/min. (no load) 100,000 operations/min. (at rated load)	
Weight	About 35 grams	

SKNP- 3C,4C

Socket:
3 Pole - DSM-11F
4 Pole - DSM-14



Coil Specification (At 20°C)

TYPE	SKNP-3C				SKNP-4C				Pull-In Voltage (VDC)	Drop-Out Voltage (VDC)	Max. Allowable Voltage (VDC)
	Nominal Voltage (VDC)	Nominal Current (mA) 60 Hz	Coil Resistance (Ω) ±10%	Power Consumption	Nominal Current (mA) 50 Hz	60 Hz	Coil Resistance (Ω) ±10%	Power Consumption			
AC Coil	6	183	115	About 1.6 to 2.0 VA (60 Hz)	386	330	5	About 1.95 to 2.5 VA (60 Hz)	85% Max.	30% Min.	of rated Voltage
	12	91	46		199	170	20				
	24	46	180		93.6	80	78				
	48	34	735		46.8	40	350				
	120	9.8	4,430		24.5	21	1,600				
	240	4.2	12,950		13.1	11.2	6,700				
DC Coil	6	150	25.7	About 1.4 W	240	25	About 1.5 W	80% Max.	10% Min.	of Rated Voltage	
	12	75	107		120	100					
	24	36.9	410		69	350					
	48	18.5	1,700		30	1,600					
	110	10	8,500		15.9	6,900					

Contact Rating

ITEM	TYPE	
	3 Pole	4 Pole
Contact Capacity Resistive Load (Cos. φ = 1)	AC 240 V 10 A DC 24 V 10 A	AC 240 V 10 A DC 24 V 10 A
Inductive Load (Cos. φ = 0.4 L/R = 7 msec.)	DC 24 V 5 A DC 24 V 5 A	DC 24 V 5 A DC 24 V 5 A
Rated Carrying Current	10 A	10 A
Max. Allowable Voltage	DC 110 V / AC 240 V	DC 110 V / AC 240 V
Max. Allowable Current	10A	10 A
Max. Allowable Power Force	1700 VA / 360 W	1100 VA / 240 W
Referential Min. Applicable Load	DC 10 V 10 mA	DC 10 V 10 mA
Contact Material	AgCdO	AgCdO

Ordering Information

SKN P LM 3C 120 VAC

Coil Voltage
See coil specifications
for available voltages.
Other voltages available
as special orders.

Contact Configuration
3C - 3PDT 4C - 4PDT

Blank - No Options
L - Neon Lamp
M - Manual Actuator
LM - Lamp and Actuator

P - Plug In S - Stud Mount Side
T - Tab Mount S1 - Stud Mount Top
B - P.C. Board Terminal

UL #E96834(M) (U.S. & Canada)
C.S.A. #LR83798-1