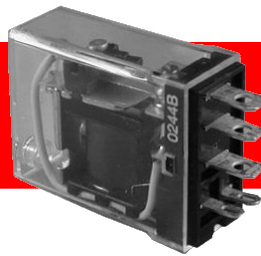
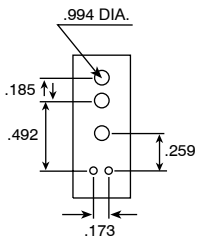
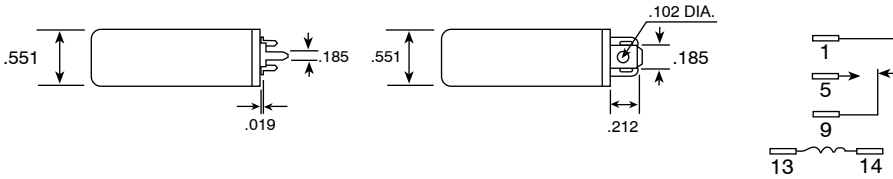


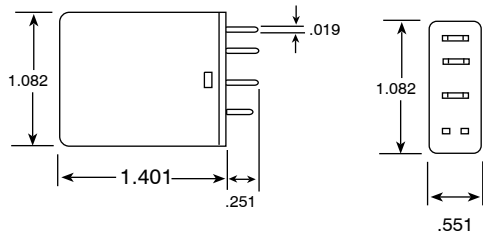
SKNPA



SPDT

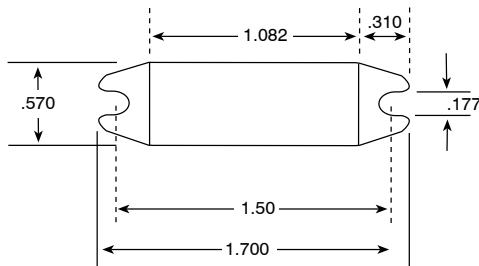


P.C. LAYOUT

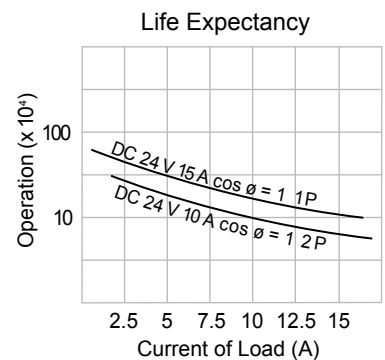
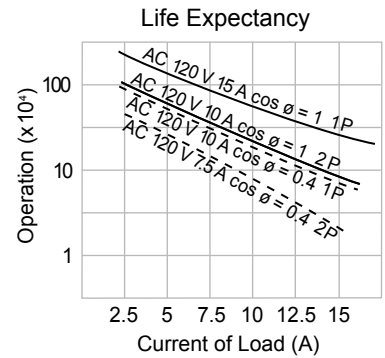
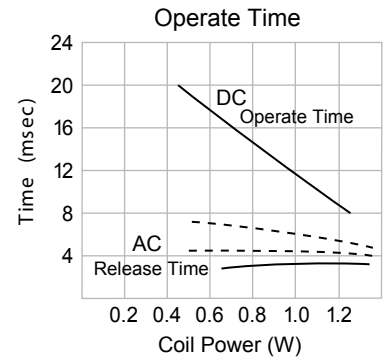
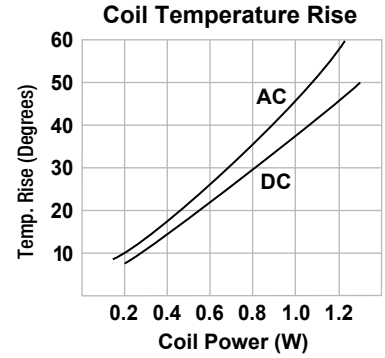


PLUG-IN TERMINAL

SKNPA TAB MOUNT



Reference Data



Performance (At Initial Value)

ITEM	TYPE
	1 Pole
Contact Resistance	50 mΩ Max.
Operate Time	20 msec Max.
Release Time	20 msec Max.
Dielectric Strength: Between Coil and Contact Between Contacts	AC 2000 V, 50/60 Hz (1 minute) AC 1000 V, 50/60 Hz (1 minute)
Surge Resistance	3000 V (between coil and contact 1x40 μ sec.)
Insulation Resistance	100 MΩ Min. (500 VDC)
Max. ON/OFF Switching: Mechanically Electrically	240 operations/min. 30 operations/min.
Operating Ambient Temperature	-30°C to +70°C (no water condensation and no water drop)
Operating Humidity	45% to 85% R.H.
Coil Temperature Rise	85°C Max. (at rated coil voltage)
Vibration: Endurance Error Operation	10 to 55 Hz Double Amplitude 1.0 mm 10 to 55 Hz Double Amplitude 1.0 mm
Shock: Endurance Error Operation	100 G Min. 10 G Min.
Life Expectancy: Mechanically Electrically	50,000,000 operations/min. (no load) 500,000 operations/min. (at rated load)
Weight	About 24 grams

SKNPA

Coil Specification (At 20°C)

TYPE	Nominal Voltage (VDC) (VAC)	Nominal Current (mA) 60 Hz	Coil Resistance (Ω) 10%	Power Consumption	Pull-In Voltage (VDC)	Drop-Out Voltage (VDC)	Max. Allowable Voltage (VDC)
AC Coil	6	150	11.2	About 1.0 A (60 Hz)	80% Max.	30% Min.	110%
	12	75	45				
	24	37	180				
	48	--	-----				
	120	7.5	4,430				
DC Coil	6	128	47	About 0.8 W	80% Max.	10% Min.	110%
	12	64	188				
	24	32	750				
	48	18	2,600				

Contact Rating

ITEM	TYPE
	1 Pole
Contact Capacity Resistive Load (Cos. ϕ = 1)	AC 240 V 15 A DC 24 V 15 A
Inductive Load (Cos. ϕ = 0.4 L/R = 7 msec.)	DC 24 V 7 A DC 24 V 7 A
Rated Carrying Current	15 A
Max. Allowable Voltage	DC 110 V / AC 240 V
Max. Allowable Current	15A
Max. Allowable Power Force	1700 VA / 360 W
Referential Min. Applicable Load	DC 10 V 10 mA
Contact Material	AgCdO

Ordering Information

SKN P A LM 1C 120VAC

Coil Voltage
See coil specifications
for available voltages.
Other voltages available
as special orders.

Contact Configuration
1C – SPDT

Blank – No Options
L – Neon Lamp
M – Manual Actuator
LM – Lamp and Actuator

P – Plug In
T – Tab Mount
B – P.C. Board Terminal

UL #E96834(M) (U.S. & Canada)

