



# Model NDSQ-11A\*

UL #E72711 US & Canada

### Type

Surface or DIN Rail Mount  
for Square Base Relay up to 3PDT

### Current Carrying Members

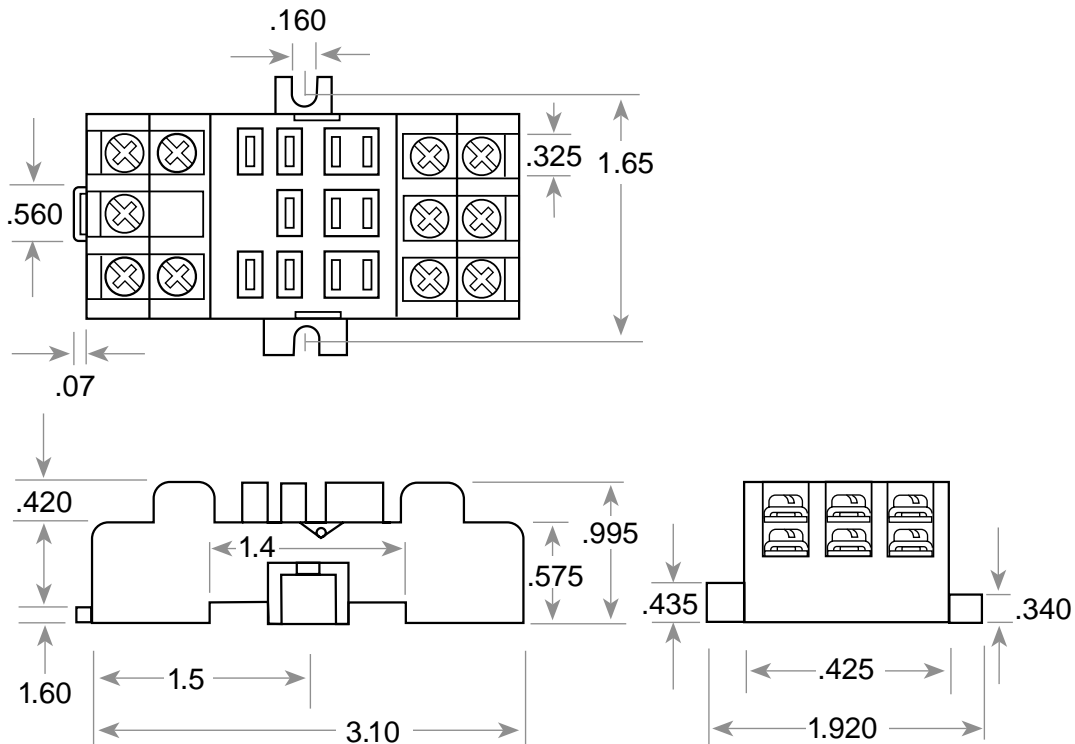
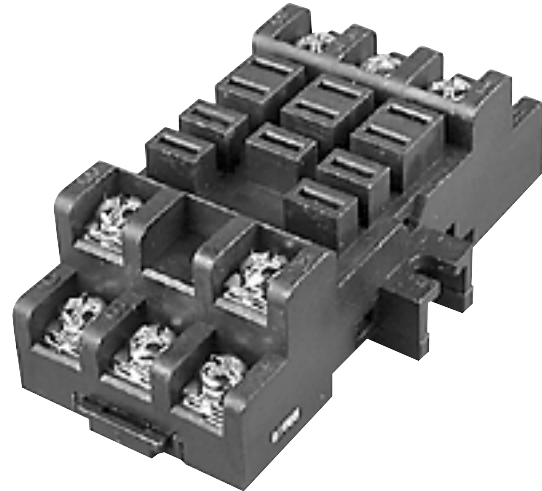
Phosphor Bronze Nickel Plated Steel

### Terminals

Screw with Captive Wire Clamps

### Electrical Rating

1PDT and 2PDT: 25A, 600VAC  
3PDT: 20A, 600VAC



\*Break-resistant Polycarbonate or Glass-filled Nylon

