



# Model SI-14\*

UL #E72711 US & Canada

### Type

Thru-Chassis Mount for Miniature 4PDT Relay

### Current Carrying Members

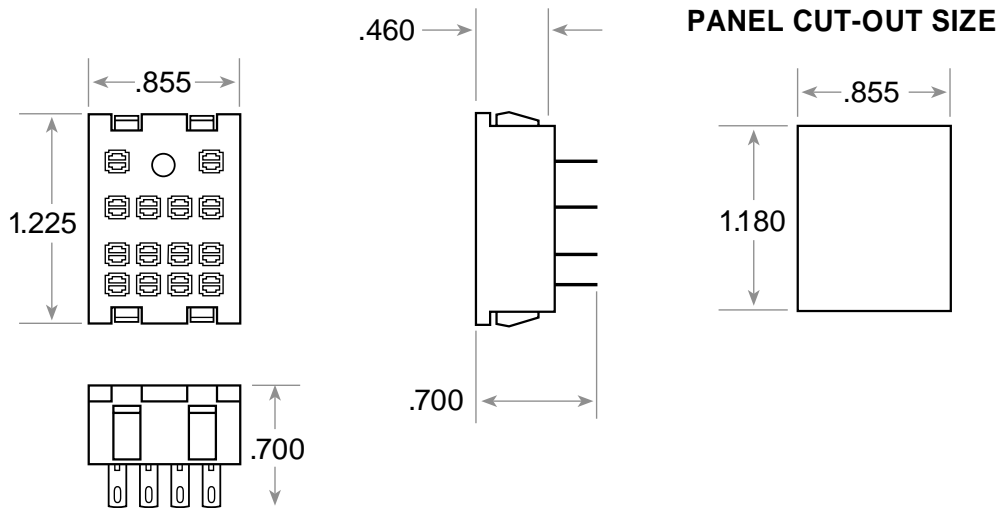
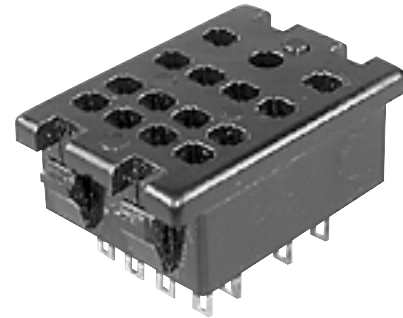
Phosphor Bronze Nickel Plated Steel

### Terminals

Plug-in

### Electrical Rating

7A, 300VAC



\*Break-resistant Polycarbonate or Glass-filled Nylon

